

Injury attendances to Tameside General Hospital Emergency Department

July 2010 to June 2011

This report summarises recorded injury attendances to Tameside Emergency Department (ED) between July 2010 and June 2011.

Between July 2010 and June 2011 there were 75,386 injury attendances to Tameside ED. Males accounted for half (50%) of all attendances. The month with the highest attendances for injury was May (n=6,598) with February having the lowest (n=5,704) (**Figure 1**). The majority (87%) of attendances were recorded as other injury; falls accounted for the highest proportion (6%) of specified injury groups followed by road traffic collisions (RTCs) (2%) and assaults (2%) (**Table 1**).

For all injuries the highest proportion of attendances were for persons aged 20 to 34 (22%) and 65 plus years (19%) (**Figure 2**). A third (33%) of fall injury attendances were by persons aged 65 or over. Two-fifths (40%) of RTC attendances were for persons aged 20 to 34. Over a half (54%) of all sports injury attendances were for persons aged 5 to 19 with over a third (36%) aged between 20 and 34 (**Figure 3**).

Table 2 shows the ethnicity of injury attendees to Tameside ED. Over four-fifths (82%) were white, 11% were recorded as not collected and 2% were Pakistani.

The disposal of a patient can give an indication of the severity of the injuries sustained. Most attendees

were referred for further treatment (56%), nearly a quarter (24%) were admitted and 11% were discharged (**Table 3**). Over three in ten (31%) of deliberate self-harm (DSH) attendees were referred whilst nearly two-fifths (39%) were admitted. Over seven in ten (71%) of sports injury attendances were referred. A quarter (25%) of RTC attendances were discharged (**Table 4**).

Table 5 shows the arrival method of injury attendances at Tameside ED. For nearly seven in ten (68%) of attendees the method of arrival was recorded as other.

Table 6 shows assault attendances to Tameside ED. Nearly three-quarters (73%) of assault attendees were male, and over two-fifths (41%) were aged 20 to 34. Half (50%) of assault attendees arrived at the ED by ambulance, and nearly two-fifths (38%) of assault attendances occurred at weekend nights.

Figure 4 (a-d) shows crude rates of injury attendance at Tameside ED by area of residence, in this case Middle Super Output Area (MSOA). The MSOA with the highest crude rates are indicated beneath each figure.¹

¹ Population figures are drawn from mid-2008 population estimates from the Office for National Statistics.

Figure 1: Tameside ED: Total injury attendances by gender and month, July 2010 to June 2011

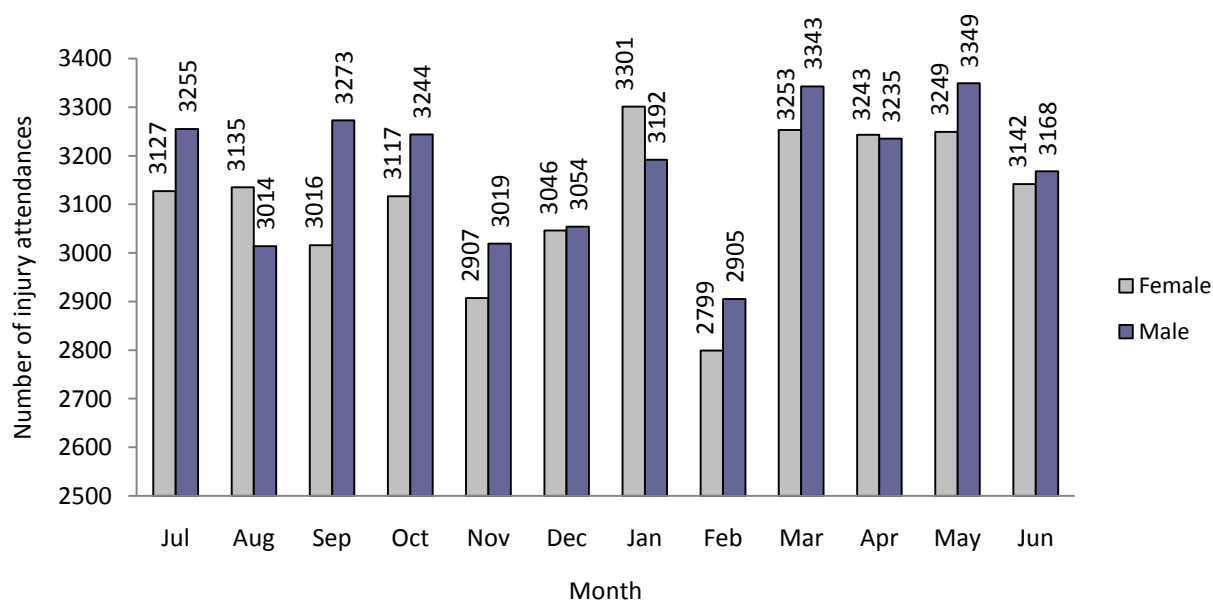


Table 1: Tameside ED: Total injury attendances by injury group and month, July 2010 to June 2011*

Injury group	Jul	Aug	Sep	Oct	Nov	Dec	Jan	Feb	Mar	Apr	May	Jun	Total	%
Other	5282	5114	5522	5472	5142	5355	5623	5016	5754	5716	5810	5657	65463	87
Fall	403	384	320	368	306	398	405	281	362	305	370	302	4204	6
RTC	136	118	142	160	143	141	121	100	140	100	105	127	1533	2
Assault	118	103	99	123	80	87	117	116	77	121	86	74	1201	2
Sports injury	95	67	102	101	77	20	74	82	133	90	88	38	967	1
Unknown	229	259	29	36	98	33	43	34	35	37	28	13	874	1
DSH	73	51	48	58	55	36	60	45	54	64	61	56	661	1
Alcohol related	46	53	27	43	25	30	50	30	41	45	50	43	483	1
Total	6382	6149	6289	6361	5926	6100	6493	5704	6596	6478	6598	6310	75386	100

*Percentages may not add up to 100 due to rounding.

Figure 2: Tameside ED: Total injury attendances by age group and month, July 2010 to June 2011

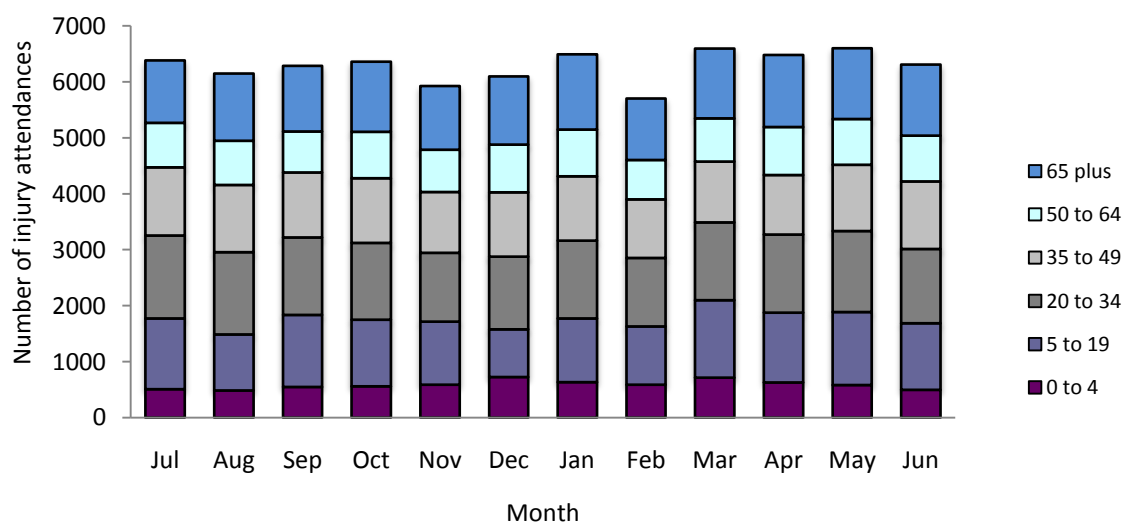


Figure 3: Tameside ED: Total injury attendances by age group and injury group (excluding other injury), July 2010 to June 2011

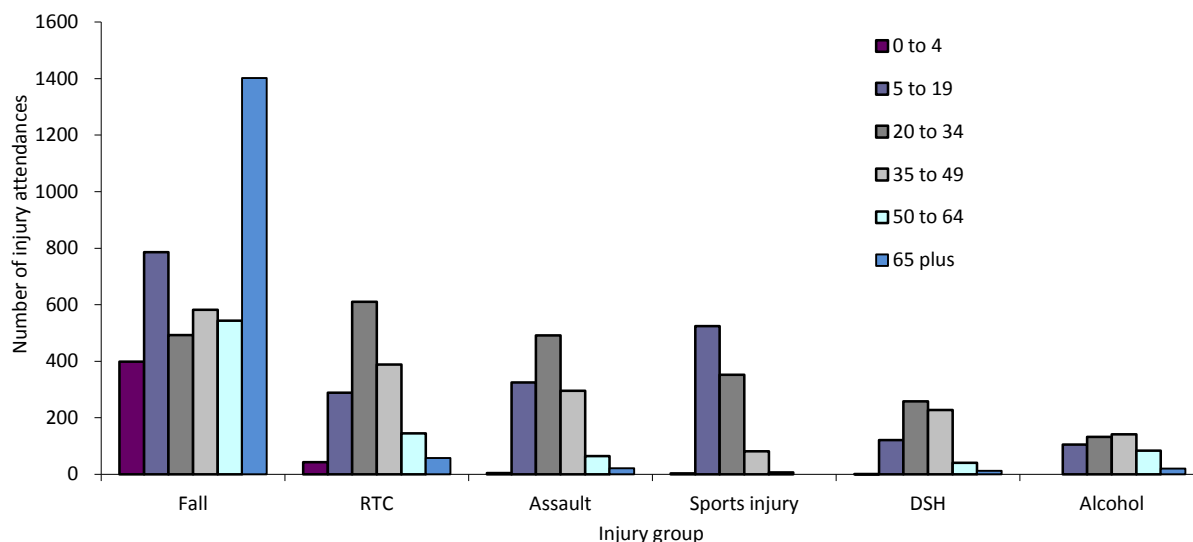


Table 2: Tameside ED: Total injury attendances by ethnicity and month, July 2010 to June 2011²³

Ethnicity	Jul	Aug	Sep	Oct	Nov	Dec	Jan	Feb	Mar	Apr	May	Jun	Total	%
White	5234	5118	5213	5263	4925	5015	5383	4662	5442	5375	5392	5144	62166	82
Not collected	676	634	681	644	602	649	644	656	702	647	752	733	8020	11
Pakistani	105	91	91	109	105	103	121	97	107	116	112	107	1264	2
Other	92	103	71	96	69	96	95	73	95	104	91	79	1064	1
Bangladeshi	86	56	76	64	65	60	80	65	81	87	103	101	924	1
Indian	56	57	44	80	50	55	52	37	61	41	55	54	642	1
Not stated	45	26	48	45	42	45	54	38	38	37	41	34	493	1
Mixed	51	35	37	28	40	36	38	41	39	49	25	31	450	1
Black	28	20	20	25	***	20	19	23	21	***	19	20	255	0
Chinese	9	9	8	7	***	21	7	12	10	***	8	7	108	0
Total	6382	6149	6289	6361	5926	6100	6493	5704	6596	6478	6598	6310	75386	100

Table 3: Tameside ED: Total injury attendances by method of disposal and month, July 2010 to June 2011⁴

Disposal	Jul	Aug	Sep	Oct	Nov	Dec	Jan	Feb	Mar	Apr	May	Jun	Total	%
Referred/follow-up	3615	3543	3836	3636	3435	3497	3557	3130	3626	3576	3541	3320	42312	56
Admitted	1391	1378	1335	1471	1463	1538	1691	1502	1594	1519	1489	1529	17900	24
Discharged	804	711	701	743	526	525	631	540	786	789	987	875	8618	11
Other	572	517	417	511	502	540	614	532	590	594	581	586	6556	9
Total	6382	6149	6289	6361	5926	6100	6493	5704	6596	6478	6598	6310	75386	100

² White = white Irish, white British, white; Mixed = mixed white and black, mixed white and black African, mixed white and Asian, mixed any other; Other = Any other ethnic group, Any other Asian background; Black = African, Caribbean, other black.

³ Please note that all numbers less than five have been suppressed in line with patient confidentiality and if there is only one number <5 in category then two numbers will be suppressed at the next level.

⁴ Admitted=admitted to ED bed/became a lodged patient of the same health care provider; Discharged=discharged - did not require any follow up treatment; Referred=discharged - follow up treatment to be provided by GP, referred to ED clinic, referred to fracture clinic, referred to other out-patient clinic, transferred to other health care provider, referred to other health care professional; Other=died in department, left department before being treated, left department having refused treatment, other.

Table 4: Tameside ED: Total injury attendances by method of disposal and injury group (excluding other injury and not recorded), July 2010 to June 2011*

Disposal	Alcohol		Assault		Fall		RTC		DSH		Sports injury		Total	
	n	%	n	%	n	%	n	%	n	%	n	%	n	%
Referred/follow-up	233	48	713	59	2639	63	1018	66	202	31	682	71	5487	61
Discharged	56	12	167	14	666	16	376	25	12	2	228	24	1505	17
Admitted	87	18	90	7	659	16	54	4	258	39	19	2	1167	13
Other	107	22	231	19	240	6	85	6	189	29	38	4	890	10
Total	483	100	1201	100	4204	100	1533	100	661	100	967	100	9049	100

*Percentages may not add up to 100 due to rounding.

Table 5: Tameside ED: Total injury attendances by mode of arrival and month, July 2010 to June 2011

Arrival mode	Jul	Aug	Sep	Oct	Nov	Dec	Jan	Feb	Mar	Apr	May	Jun	Total	%
Other	4488	4215	4364	4310	3950	4019	4228	3862	4608	4427	4593	4274	51338	68
Ambulance	1894	1934	1925	2051	1976	2081	2265	1842	1988	2051	2005	2036	24048	32
Total	6382	6149	6289	6361	5926	6100	6493	5704	6596	6478	6598	6310	75386	100

Table 6: Tameside General Hospital ED: Assault attendances by gender, mode of arrival, age group and day/time of attendance, July 2010 to June 2011

Injury type	Assault attendees		All injuries % (n=75,386)
	n	%	%
Gender			
Female	323	27	50
Male	878	73	50
Mode			
Ambulance	606	50	32
Other	595	50	68
Age group			
0 - 4	***	0	9
5 - 19	325	27	19
20 - 34	492	41	22
35 - 49	295	25	18
50 - 64	64	5	13
65 plus	***	2	19
Day & time			
Weekend nights*	461	38	11
Weekend days	244	20	20
Weekdays	496	41	69

*8pm to 4am, Friday night/Saturday morning; Saturday night/Sunday morning; Sunday night/Monday morning.

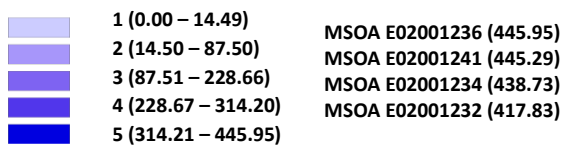
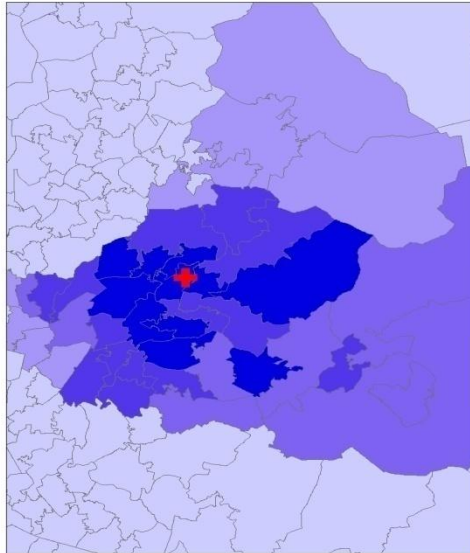
Author: Ian Warren, Published: September 2011

For further information please contact: Centre for Public Health, Research Directorate, Liverpool John Moores University, 2nd Floor, Henry Cotton Building, 15-21 Webster Street, Liverpool, L3 2ET, Tel: 0151 231 4513 or Email: ij.warren@ljmu.ac.uk .Website: www.tiig.info

Figure 4a,b,c,d: Middle Super Output Area of residence for injury attendances to Tameside ED. Quintiles of crude rates per 1,000 population, July 2010 to June 2011

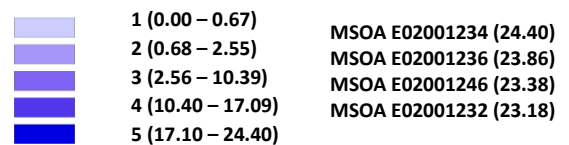
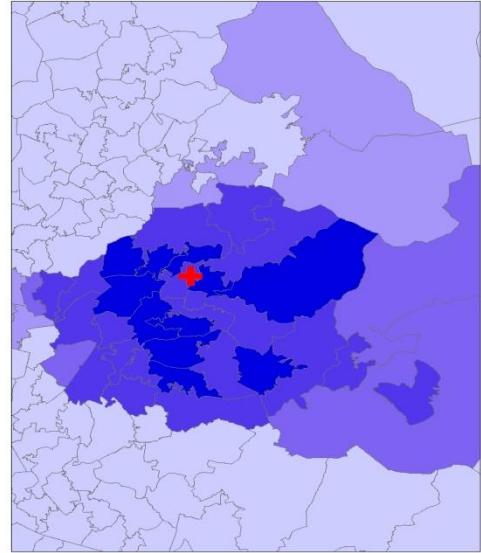
a) All injuries: quintiles of crude rates per 1,000 population

+ Tameside ED



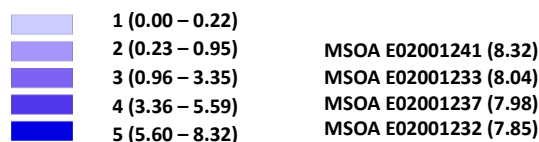
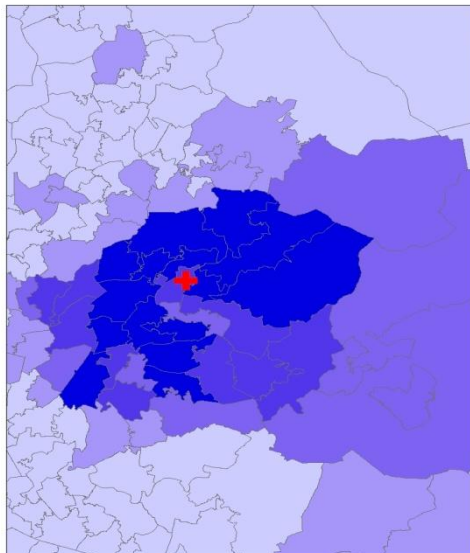
b) Fall injuries: quintiles of crude rates per 1,000 population

+ Tameside ED



c) RTCs: quintiles of crude rates per 1,000 population

+ Tameside ED



d) Assault: quintiles of crude rates per 1,000 population

+ Tameside ED

